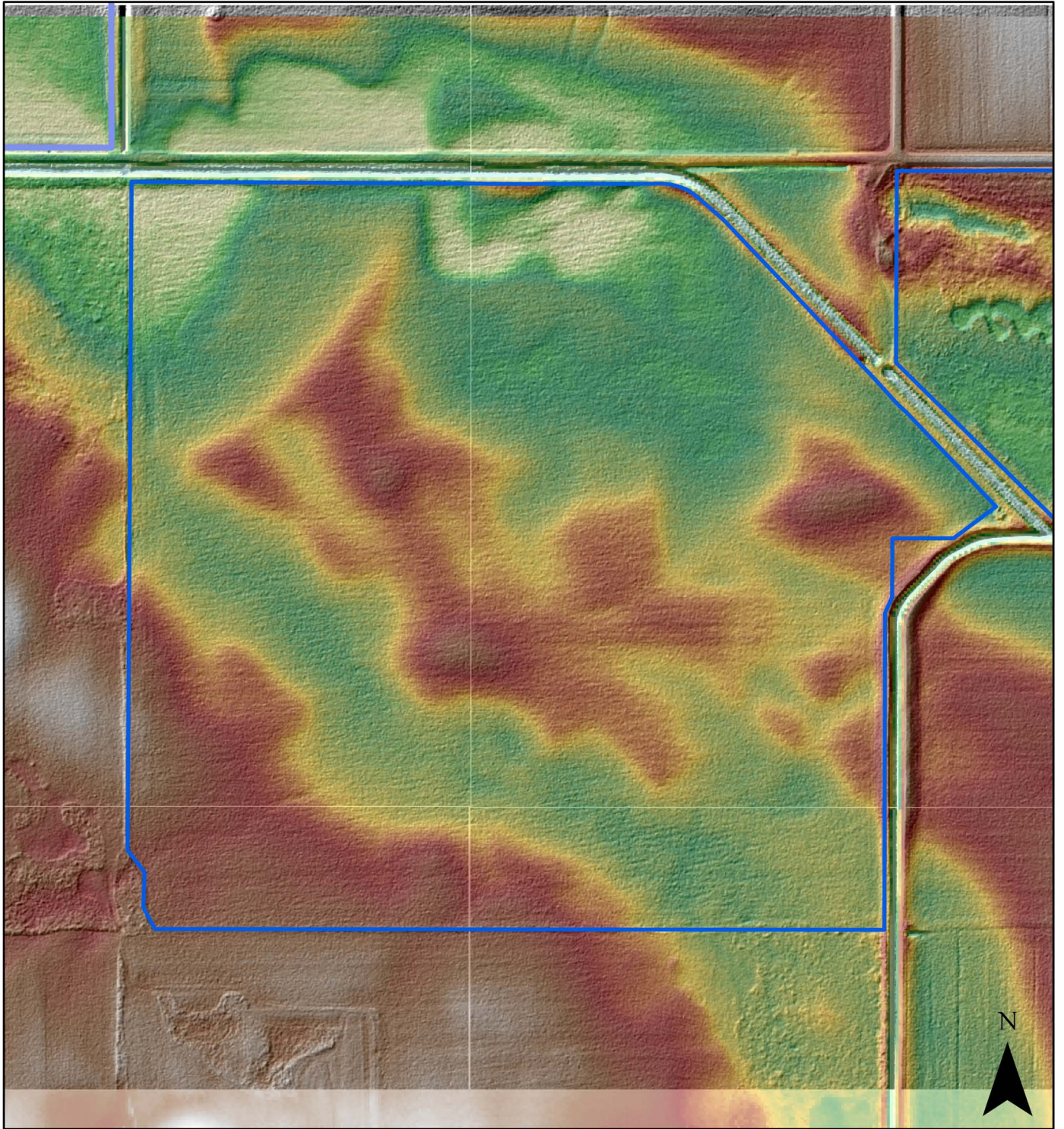




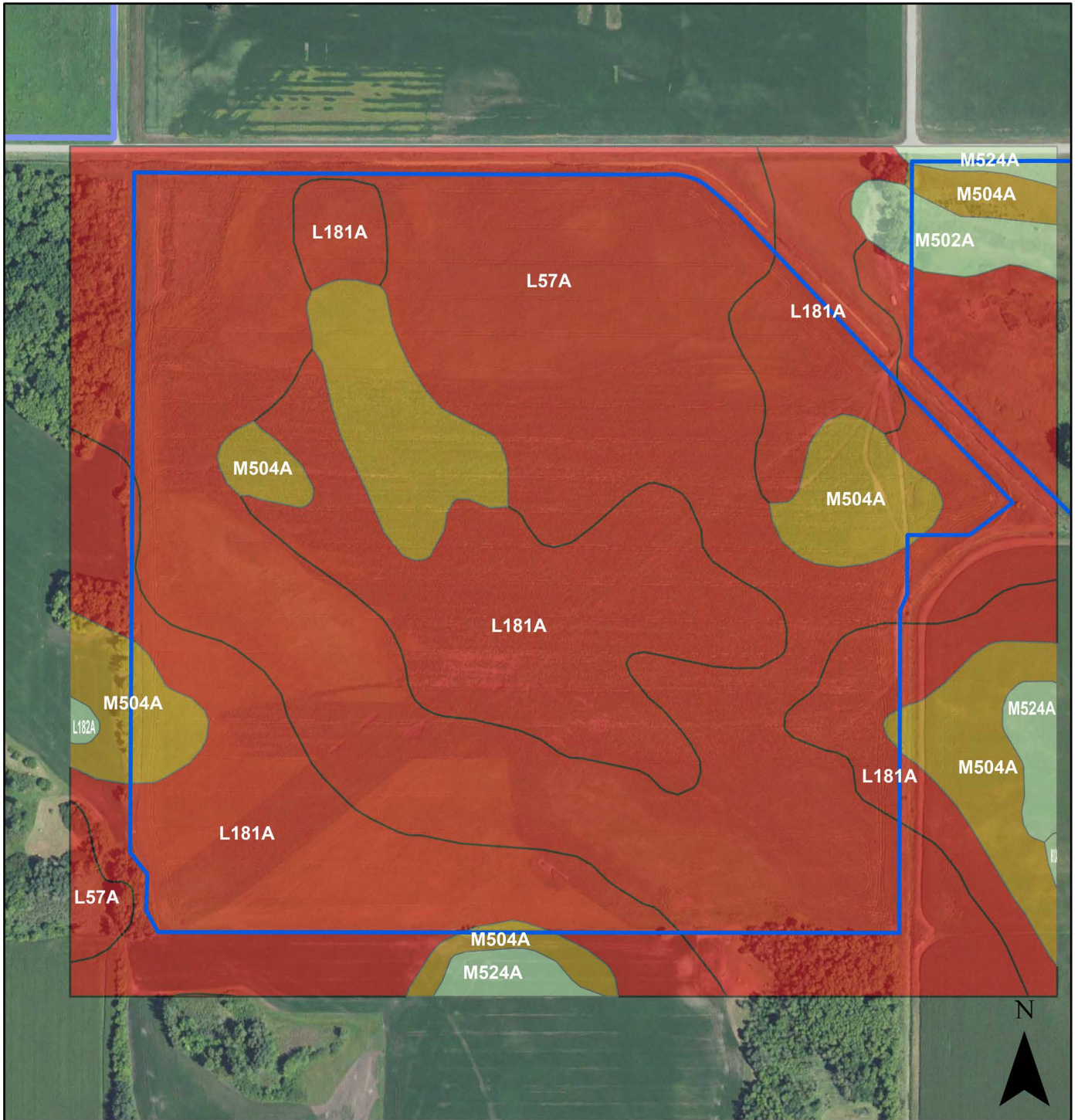
2019 Photo - flown July 27

0 250 500 1,000 Feet

## Example 1- Site Assessment



**Example 1- Site Assessment**



**Legend**

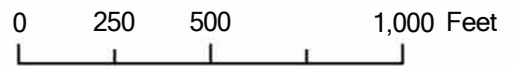
Soil\_clip

Hydric Classification -  
Presence

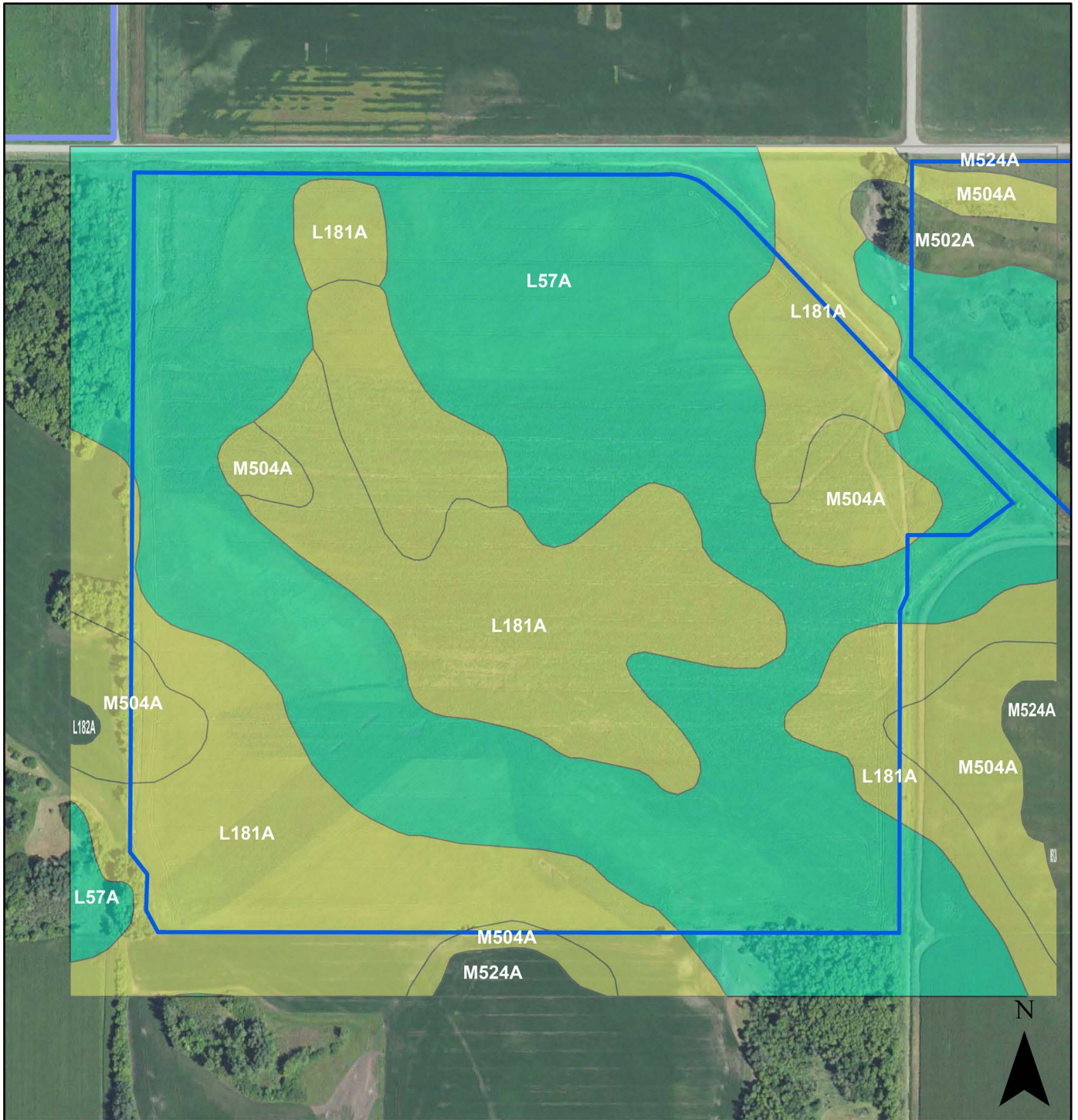
- 100

- 85

0 S



**Example 1- Site Assessment**



## Legend

Soil\_clip

Ponding Frequency -  
Presence

0100

0s

Do

0 250 500 1,000 Feet

Example 1- Site Assessment

## Report—Engineering Properties (MN)

Engineering Properties (MN)—Dodge County, Minnesota														
Map unit symbol and soil name	Pct. of map unit	Hydrologic group	Depth	USDA texture	Classification		Fragments		Percentage passing sieve number—				Liquid limit	Plasticity index
					Unified	AASHTO	>10 inches	3-10 inches	4	10	40	200		
			<i>In</i>				<i>Pct</i>	<i>Pct</i>					<i>Pct</i>	
L57A—Medo muck, depressional, 0 to 1 percent slopes														
Medo, depressional	85	B/D	0-10	Muck	PT	A-8	0	0	—	—	—	—	—	—
			10-26	Muck	PT	A-8	0	0	—	—	—	—	—	—
			26-36	Silt loam, clay loam, mucky loam, silty clay loam	ML, OH	A-7-5	0-2	0-2	91-100	85-98	69-97	52-81	42-78	13-27
			36-48	Clay loam, silty clay loam, loam	CL, ML, OH	A-7-5, A-7-6, A-6	0-1	0-1	93-100	87-98	73-97	55-81	31-68	13-27
			48-65	Clay loam, silt loam, loam	SC-SM, CL	A-7-6, A-4, A-6	0-1	0-1	90-98	82-97	69-97	48-79	23-49	7-28
			65-79	Gravelly fine sandy loam, gravelly sandy loam, silt loam, gravelly loamy sand, gravelly loam, gravelly sand	CL-ML, SC-SM, SM	A-1-b, A-4	0-1	0-2	85-98	67-97	48-91	24-61	0-22	NP-6

Engineering Properties (MN)–Dodge County, Minnesota														
Map unit symbol and soil name	Pct. of map unit	Hydrologic group	Depth	USDA texture	Classification		Fragments		Percentage passing sieve number—				Liquid limit	Plasticity index
					Unified	AASHTO	>10 inches	3-10 inches	4	10	40	200		
			<i>In</i>				<i>Pct</i>	<i>Pct</i>					<i>Pct</i>	
L180A—Maxcreek silty clay loam, 0 to 2 percent slopes														
Maxcreek	85	B/D	0-13	Silty clay loam	MH, ML	A-7-5, A-7-6	0	0	100	100	95-100	92-100	47-59	18-22
			13-21	Silt loam, silty clay loam	CL, ML	A-7-6, A-6	0	0	100	100	95-100	92-100	36-52	13-22
			21-30	Silty clay loam, silt loam	CL	A-7-6, A-6	0	0	100	95-100	85-95	75-90	30-44	13-21
			30-41	Loam, clay loam	CL	A-7-6, A-6	0	0-5	95-100	90-95	60-80	50-75	27-42	12-21
			41-60	Loam, sandy clay loam	CL	A-6	0	0-5	95-100	90-95	60-80	50-75	27-38	12-19
L181A—Kish, till substratum-Mayer complex, 0 to 2 percent slopes														
Kish, till substratum	70	B/D	0-12	Clay loam	MH, ML	A-7	0	0-2	95-100	85-100	70-90	50-85	47-61	18-20
			12-41	Sandy clay loam, silt loam, loam	CL, SC	A-4, A-6	0	0-5	95-100	90-100	70-90	40-85	27-40	9-19
			41-61	Sandy loam, loam	CL, SC	A-2-4, A-4, A-6	0	0	95-100	90-100	55-95	30-70	24-30	9-13
			61-80	Loam	CL	A-6	0	0-5	95-100	90-95	60-80	50-75	27-38	12-19
Mayer	25	B/D	0-18	Clay loam	MH, ML	A-7	0	0-2	95-100	85-100	70-90	50-85	47-61	18-20
			18-33	Sandy clay loam, silt loam, loam	CL, SC	A-6	0	0-5	90-100	85-100	70-90	40-85	29-40	12-19
			33-80	Stratified gravelly coarse sand to sand, gravelly coarse sand	SP-SM, SW	A-1	0-1	0-10	65-95	45-85	20-45	2-10	0-17	NP-2

Engineering Properties (MN)–Dodge County, Minnesota														
Map unit symbol and soil name	Pct. of map unit	Hydrologic group	Depth	USDA texture	Classification		Fragments		Percentage passing sieve number—				Liquid limit	Plasticity index
					Unified	AASHTO	>10 inches	3-10 inches	4	10	40	200		
			<i>In</i>				<i>Pct</i>	<i>Pct</i>					<i>Pct</i>	
M504A—Marshan clay loam, 0 to 2 percent slopes, rarely flooded														
Marshan, rarely flooded	75	C/D	0-8	Silt loam, loam, silty clay loam, clay loam	MH, ML	A-7-5, A-6	0	0	100	82-100	71-100	57-91	39-56	11-24
			8-14	Loam, clay loam, silty clay loam, silt loam	CL, MH	A-7-5, A-7-6, A-6	0	0	100	82-100	72-100	59-93	32-55	12-24
			14-18	Loam, clay loam, silty clay loam, silt loam	CH, CL	A-7-6, A-6	0	0	100	83-100	73-100	60-93	30-51	12-25
			18-23	Clay loam, silty clay loam, loam, silt loam	CL	A-7-6, A-6	0	0	100	83-100	73-100	60-93	29-47	12-25
			23-30	Sandy loam, clay loam, loam, silt loam	CL, SC	A-7-6, A-6	0	0	92-100	84-100	68-97	45-73	29-42	12-21
			30-40	Coarse sand, loamy sand, gravelly sand, sand	SP-SC, SP-SM, SW	A-1-a, A-2-4, A-1-b	0	0-3	78-97	39-92	25-65	3-14	0-22	NP-6
			40-79	Gravelly sand, coarse sand, loamy sand, sand	SP-SC, SP-SM, SW	A-1-a, A-2-4, A-1-b	0	0-3	78-97	39-92	25-65	3-14	0-22	NP-6