

Wet Prairie 34-266

Updated: 2024

This mix has been designed for areas with soil saturation within a foot of the surface during most of the growing season and full to partial sun where land is being converted from other uses such as agriculture or non-native grasses to a wetland restoration. This mix is most often used as part of prairie pothole restoration projects.



Partners also include collaboration among Non-profits, Seed vendors, SWCD, Tribal Governments, Consultants, County and Cities. (See partner list on [website](#))

34-266 Wet Prairie Mix

Code	Common Name	Scientific Name	PLS lb/ac	% by PLS lb/ac	Seeds/ft2	% by Seeds/ft2
andger	Big Bluestem	Andropogon gerardii	1.09	3.35%	4.00	2.91%
brocil	Fringed Brome	Bromus ciliatus	0.74	2.28%	2.99	2.17%
calcan	Bluejoint Grass	Calamagrostis canadensis	0.04	0.12%	4.11	2.99%
elyvir	Virginia Wild Rye	Elymus virginicus	1.62	4.98%	2.50	1.82%
glygra	American Manna Grass	Glyceria grandis	0.08	0.25%	2.06	1.50%
glystr	Fowl Manna Grass	Glyceria striata	0.11	0.34%	3.64	2.65%
panvir	Switchgrass	Panicum virgatum	0.58	1.78%	2.98	2.17%
poopal	Fowl Bluegrass	Poa palustris	0.10	0.31%	4.78	3.47%
sornut	Indiangrass	Sorghastrum nutans	0.45	1.38%	1.98	1.44%
spapec	Prairie Cord Grass	Spartina pectinata	0.84	2.58%	2.04	1.48%
		Grasses Subtotal	5.65	17.38%	31.08	22.61%
carpel	Woolly Sedge	Carex pellita	0.04	0.12%	0.41	0.30%
carsco	Pointed-broom Sedge	Carex scoparia	0.08	0.25%	2.47	1.80%
carvul	Brown Fox Sedge	Carex vulpinoidea	0.16	0.49%	5.88	4.28%
jundud	Dudley's Rush	Juncus dudleyi	0.01	0.03%	11.75	8.55%
sciatr	Dark Green Bulrush	Scirpus atrovirens	0.09	0.28%	15.21	11.06%
scicyp	Woolgrass	Scirpus cyperinus	0.02	0.06%	12.49	9.08%
		Sedges & Rushes Subtotal	0.40	1.23%	48.21	35.07%
achmil	Common Yarrow	Achillea millefolium	0.01	0.03%	0.65	0.48%
anecan	Canada Anemone	Anemone canadensis	0.02	0.06%	0.06	0.04%
ascinc	Swamp Milkweed	Asclepias incarnata	0.17	0.52%	0.30	0.22%
descan	Showy Tick Trefoil	Desmodium canadense	0.10	0.31%	0.20	0.15%
doeumb	Flat-topped Aster	Doellingeria umbellata	0.02	0.06%	0.49	0.36%

eupper	Boneset	Eupatorium perfoliatum	0.03	0.09%	1.76	1.28%
eutgra	Grass-leaved Goldenrod	Euthamia graminifolia	0.01	0.03%	1.29	0.94%
eutmac	Joe Pye Weed	Eutrochium maculatum	0.03	0.09%	1.05	0.76%
genand	Bottle Gentian	Gentiana andrewsii	0.01	0.03%	1.03	0.75%
helaut	Sneezeweed	Helenium autumnale	0.06	0.18%	2.87	2.08%
helgro	Sawtooth Sunflower	Helianthus grosseserratus	0.04	0.12%	0.22	0.16%
lialig	Meadow Blazing Star	Liatris ligulistylis	0.03	0.09%	0.11	0.08%
liapyc	Prairie Blazing Star	Liatris pycnostachya	0.11	0.34%	0.44	0.32%
lobsip	Great Blue Lobelia	Lobelia siphilitica	0.02	0.06%	3.67	2.67%
lycame	Water Horehound	Lycopus americanus	0.03	0.09%	2.08	1.52%
lytala	Winged Loosestrife	Lythrum alatum	0.01	0.03%	1.10	0.80%
mimrin	Monkey Flower	Mimulus ringens	0.01	0.03%	8.45	6.15%
solrig	Stiff Goldenrod	Solidago rigida	0.03	0.09%	0.45	0.33%
pedlan	Marsh Betony	Pedicularis lanceolata	0.06	0.18%	0.86	0.63%
phlpil	Prairie Phlox	Phlox pilosa	0.01	0.03%	0.07	0.05%
pycvir	Virginia Mountain Mint	Pycnanthemum virginianum	0.03	0.09%	2.42	1.76%
rudhir	Black-eyed Susan	Rudbeckia hirta	0.03	0.09%	1.01	0.74%
solrid	Riddell's Goldenrod	Solidago riddellii	0.04	0.12%	1.37	0.99%
symeri	Heath Aster	Symphotrichum ericoides	0.01	0.03%	0.73	0.53%
symlan	Panicled Aster	Symphotrichum lanceolatum	0.01	0.03%	0.57	0.42%
symnov	New England Aster	Symphotrichum novae-angliae	0.04	0.12%	0.96	0.69%
sympun	Swamp Aster	Symphotrichum puniceum	0.02	0.06%	0.59	0.43%
thadas	Purple Meadow Rue	Thalictrum dasycarpum	0.06	0.18%	0.16	0.12%
verhas	Blue Vervain	Verbena hastata	0.15	0.46%	5.12	3.73%
verfas	Common Ironweed	Vernonia fasciculata	0.03	0.09%	0.26	0.19%
vervir	Culver's Root	Veronicastrum virginicum	0.02	0.06%	5.88	4.28%
zizaur	Golden Alexanders	Zizia aurea	0.20	0.62%	0.81	0.59%
		Forbs Subtotal	1.45	4.46%	47.05	34.22%
cover	Oats/Winter Wheat	Avena sativa/Triticum aestivum	25.00	76.92%	11.14	8.10%
		Cover Crop Subtotal	25.00	76.92%	11.14	8.10%
		Total	32.50	100.00%	137.47	100.00%

Seed Mix Enhancements or Substitutions

List of Additional Species to Add Diversity or for Substitutions

The numbers (1-9) are species ranges that relate to the MN Ecological Subsections.

Wet Prairie

Updated 10-01-2022

Grasses:

Scientific Name	Common Name	Recommended Seeds per Square Foot
<i>Bromus pubescens</i>	Hairy Wood Chess	4
<i>Calamagrostis stricta</i> (2,5,8,9)	Narrow Reedgrass	3
<i>Elymus riparius</i>	Riverbank Wild Rye	4
<i>Elymus villosus</i>	Downy Wild Rye	4
<i>Glyceria canadensis</i> (1,2,5,6)	Rattlesnake Grass	3
<i>Leersia oryzoides</i>	Rice Cutgrass	5
<i>Muhlenbergia racemosa</i>	Marsh Muhly Grass	2
<i>Muhlenbergia glomerata</i>	Clustered Muhly Grass	2

Forbs:

Scientific Name	Common Name	Recommended Seeds per Square Foot
<i>Anemone cylindrica</i>	Long-headed Thimbleweed	2
<i>Chamerion angustifolium</i> (1-8)	Fireweed	2
<i>Chelone glabra</i> (1,3,5-8)	White Turtlehead	2
<i>Cicuta maculata</i>	Spotted Water Hemlock	2
<i>Dalea purpurea</i>	Purple Prairie Clover	3
<i>Galium boreale</i>	Northern Bedstraw	2
<i>Gentiana andrewsii</i> (3-9)	Bottle Gentian	4
<i>Helianthus giganteus</i> (1-8)	Giant Sunflower	1
<i>Lobelia cardinalis</i>	Cardinal Flower	4
<i>Lobelia spicata</i>	Rough-spiked Lobelia	4
<i>Lysimachia ciliata</i>	Fringed Loosestrife	3
<i>Mentha arvensis</i> (7-9)	Common Mint	3
<i>Physostegia virginiana</i>	Obedient Plant	3
<i>Ranunculus fasciculatis</i>	Early Buttercup	3
<i>Silphium perfoliatum</i>	Cup Plant	2
<i>Symphyotrichum lanceolatum</i>	Eastern Panicked Aster	.5
<i>Teucrium canadense</i> (1,4,6-9)	Germander	2
<i>Thalictrum dasycarpum</i>	Tall Meadow-Rue	3
<i>Zizia aptera</i>	Heart-leaved Alexanders	.5

Sedges:

Scientific Name	Common Name	Recommended Seeds per Square Foot
<i>Carex bebbii</i>	<i>Bebb's Sedge</i>	.5
<i>Carex emoryi</i>	<i>Emory's Sedge</i>	.5
<i>Carex haydenii</i>	<i>Hayden's Sedge</i>	.5
<i>Carex scoparia</i> (1,2,4-9)	<i>Lance-fruited Oval sedge</i>	.5
<i>Juncus dudleyi</i>	<i>Dudley's Rush</i>	10

Bush:

Scientific Name	Common Name	Recommended Seeds per Square Foot
<i>Amorpha fruticosa</i>	Indigo Bush	2

Wet Prairie 34-266 Seed Mix Guidance

Seed mix name: Wet Prairie 34-266 (Previously 34-263, 34-262)

Geographic area: Southern and Western Minnesota

Year of development: 2009

Year/s of update:

Status (Standard or Pilot mix): Standard

Primary and Secondary Functions:

Primary – Wildlife habitat, restoration of wetland functions, and water management

Secondary – Carbon Sequestration, emission reductions, pollinator habitat, songbird habitat

Similar State Mixes: Wet Meadow Northeast 34-372, Wet Meadow South and West 34-272

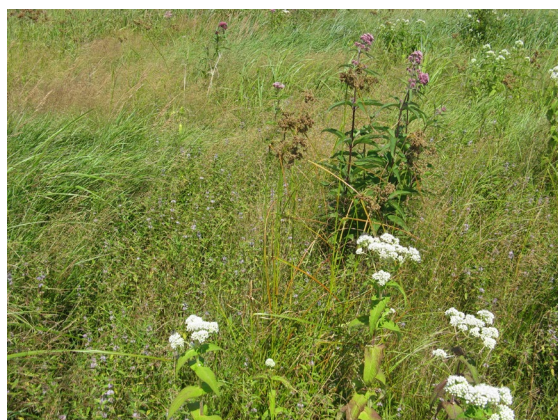
Compatible NRCS Practice Standards: NA

Compatible Minnesota CRP Practices: NA

Suitable Site Conditions: Areas with soil saturation within a foot of the surface during a majority of the growing season and full to partial sun where land is being converted from other uses such as agriculture or non-native grasses to a wetland restoration. This mix is most often used as part of prairie pothole restoration projects. The mix is similar to wet meadow mixes but includes an increased percentage of prairie species such as prairie cordgrass, big bluestem and some prairie forbs.

How to Modify for Site Conditions and Goals: This mix includes a list of additional species that can be considered to add species diversity. Site conditions such as sunlight, soils, hydrology and existing vegetation along with functional goals for the project such as carbon sequestration, pollinator habitat, and benefit to bird species can all have an influence on species selection and the modification of seed mixes. Additional plant species can also be added from containerized plants. It is also common that seed substitutions ([see list](#)) are used for wetland seed mixes when other species are not available.

Site Preparation: Primary goals for site preparation tend to focus on controlling weed species and providing ideal growing conditions for seed or plants to be installed. Site preparation methods vary depending on past uses of the site and the weed species that are present. The protection of microorganism populations and native seedbanks, preventing soil erosion, and managing weed establishment are all considerations during the site preparation process. In most cases, non-herbicide methods are preferred over herbicide intensive methods to protect aquatic organisms and soil microfauna, but herbicides may be the most efficient method of controlling some invasive perennial species. It is common for many conservation plantings to transition from corn or soybean production.



Fields that are in agriculture often have control of most weeds. Another consideration is that several chemicals being used for weed control, along with herbicides (for herbicide-resistant crops) act as pre-emergents or post-emergents (designed to inhibit germination) and can be a problem for native vegetation establishment from seed. Investigate prior chemical use and labels to help define probability of having chemical carryover that could/should be addressed by using temporary cover crops to allow time for chemicals to break down. If a site is in perennial weeds such as smooth brome, quack grass or bluegrass and cannot be put into agricultural production for one or two seasons intensive site preparation may be needed. Herbicide application is often recommended, as tilling alone may re-suspend the rhizomes, allowing them to continue growing. For species such as reed canary grass and giant reed grass, cropping with chemicals that break down quickly, or combinations of mowing, herbicide application, prescribed burning, and tilling (or possibly additional herbicide application) may be needed. The [Minnesota Wetland Restoration Guide](#) provides detailed management recommendations for a wide range of species.

Seeding Dates:

Wetland seed mixes are most often installed in the fall after October 15th as a dormant seeding as most sedges, rushes and forbs need a winter to break their seed dormancy and start growing. It is also common to wait until shortly before snowfall to prevent the loss of seed from wind, birds and rodents. Snow seeding is conducted during early or late winter when there is less than four inches of snow, and on sunny days when seed can move to the soil surface. This technique has been successful for a wide variety of species types. Refer to the Minnesota Wetland Restoration Guide for more information about snow seeding. Wet prairie seed can also be installed in the spring once soil temperatures reach 50 degrees Fahrenheit until June 30th but only a portion of the seed mix will germinate that first year. If a wetland project will be constructed in the spring/early summer or will have flowing or fluctuating water levels it may be better to seed later in the spring after water levels stabilize.

Seedbed preparation

Methods that are used to prepare a seedbed can vary depending on the type of seeding equipment to be used. If a traditional native seed drill will be used, a smooth, firm seedbed is required. Soybean fields generally are sufficiently prepared for a native seed drill, but sites that were recently tilled will require additional soil treatment such as harrowing and rolling to prepare an adequate seedbed and prevent seed from being buried too deep. Broadcast seeding can be conducted on soybean or corn fields, or fields that have been disked, as long as the soil is allowed to settle before seeding. Some practitioners have found that broadcast seeding on a smooth surface (not tilled or disked) leads to the establishment of higher diversity. It is important that the soil surface is not too hard packed, so cultipacking or light harrowing of crop fields before broadcast seeding may be needed. Seed can be lost on smooth surfaces, so it is recommended to seed into temporary cover crops or to roll sites after seeding.

Temporary Cover Crops and Mulch

The use of short-lived temporary cover crops help stabilize project sites and minimize the need for additional mulch in preparation of planting native seed mixes. They can also provide time to observe weed problems, and to allow for proper weed control before fall seeding. Temporary cover crops such as oats or winter wheat (the two species most commonly used) should be mowed to 10-12 inches before seeds mature (or harvested upon maturity) to prevent re-seeding. Slough grass (*Beckmannia syzigachne*) is a common cover crop for wet areas. Annual rye grass was commonly used but is generally avoided now due to its ability to inhibit germination of native species. Other cover crops typically used in agricultural fields, such as buckwheat, pennycress, and radishes, can help stabilize soil, build soil quality, or provide weed competition as part of restoration projects. Also see [NRCS Agronomy Technical Note 31](#).

Seeding Methods

A variety of seeding equipment is used for wetland seeding including broadcast seeders, traditional native seed drills, no-till drills, Brillion seeders and Trillion seeders. Broadcast seeders are most often used for wetland seeding as most of the seed is very small and needs to be near the soil surface to germinate. Specialized native seed drills can handle a wide variety of seed (fluffy, smooth, large and small) and low seeding rates so they are also an option for wetland seeding if they are calibrated correctly.

Management Methods –

Establishment Mowing

Establishment mowing may be beneficial for wet meadow plantings if the site conditions are not too wet for the equipment. Pressure from annual and biennial weeds is generally less with increased soil saturation and water depth. For smaller projects, brush cutters, string trimmers, or hand equipment can be used to target weeds and work around native plants. See the Minnesota Wetland Restoration Guide appendix: <http://bwsr.state.mn.us/restoration/resources/documents/appendix-6a-3mowing.pdf> Mowing at least twice the first season and once the second season with a flail mower or stalk chopper (to prevent smothering plants) is often helpful to decrease competition and to provide sufficient sunlight for seedlings. Weeds should be mowed to between five and eight inches before seed is allowed to set (usually as weeds reach 12-14 inches). Mowing height should be raised as native plants establish. The timing and frequency of mowing should be planned to allow sufficient light to reach native plant seedlings and preventing weed seed production. Sites with low weed competition due to sandy soils or other factors may not need mowing.

Prescribed Burning

Prescribed burning can be beneficial for some wet meadow plantings, particularly if burning was part of the historic plant community for the project. Burning can remove thatch, control invading woody and invasive plants, stimulate seed germination and new plant growth, and increase diversity in plantings. In some cases, the disturbance and increased nutrients from a burn can stimulate reed canary grass germination, so this should be considered when the species is a risk for a project. Burning is typically initiated after the third or fourth years of establishment, after native vegetation is reaching maturity. Burning is commonly conducted every three to five years. Fall and spring burns should be alternated periodically to simulate natural variation. Burn plans are needed to define the details of how the burn will be conducted, who will be involved and for contingency planning. In many cases, permits are also required. It is recommended to only burn one-half or less of a project site at a time if they are large (over 50 acres), or don't have any adjacent refuge such as other conservation lands adjacent to the site for wildlife species. Partial burns and burns that are patchy may also benefit pollinator populations if timed correctly (when pollinators are not actively foraging or pollinators have pupated and are mobile).

Spot Treatment of Weeds

Problematic perennial weeds that cannot be managed effectively with other methods may require spot treatment with herbicide for sufficient control. Examples include reed canary grass, quack grass, purple loosestrife, Canada thistle, and Kentucky bluegrass. In some cases, herbicide treatment is not conducted during the first or second year of establishment to avoid impact to seedlings, but it may be important to control some weeds before they have a chance to spread. A common practice for Canada thistle control involves clipping seedheads while they are in the bud stage (usually early June) and conducting herbicide application with a broad-leaf specific herbicide in the fall (mid to late October). This timing limits the application of herbicide while pollinators are active. Grass-specific herbicides are used to control reed canary grass in wet meadow restorations, particularly on sites dominated by forbs and sedges that will not be affected. Grass-specific herbicides are most effective on young reed canary plants (6-12 inches tall) than on mature plants. There is some evidence that using surfactants along with herbicides and disking prior to application may improve effectiveness. It should be noted that grass specific herbicides

are not aquatically certified and should not be used near open water. When using a broad-spectrum herbicide, it is important that an aquatic safe form of glyphosate and surfactant be used near open water. When using herbicides, labels must be followed, certified applicators must conduct the treatment and Personal Protective Equipment (PPE) must be used according to label instructions. Minimize herbicide first year/spot spray year 2. Unless significant problem weeds show up.

What to Expect in Year 1: During year one of growth many native grasses, sedges, rushes and flowers will remain about one to three inches tall. Agricultural weeds such as ragweed, barnyard grass and foxtail barley may be common but not necessarily a cause for alarm. The mowing will play an important role to keep weeds managed so the native plant seedlings receive sufficient water and sunlight. The planting may have a somewhat weedy appearance this first year.

(IMAGE)

What to Expect in Year 2: During year two the native grasses and flowers may reach their mature height and some of them may flower. Mowing will still play a key role in managing weeds and allowing seedlings to grow.

(IMAGE)

What to Expect in Year 3 and Beyond: By the end of year three most of the native plants will be nearing maturity and should flower. There may be some species that are slow to establish and may not show up for several years.

Problem Solving

Poor Establishment After Year 1 – It is often difficult to determine if a seeding is successful during the first year as establishment may vary depending on weather conditions and some species may be slow to establish. It is typically best to wait until the second year to conduct any corrective actions.

Poor Establishment After Year 2 – If native plant seedlings are not establishing about every one to two feet it may be necessary to inter-seed some species into the planting.

High Annual and Biennial Weed Competition – Typically, annual and biennial weed competition is not a big problem in wet meadow plantings as they are short lived and as long as mowing is conducted before seed is set, they should not add additional seed into the planting.

High Perennial Weed Competition – Dense establishment of perennial species can be a problem as it can prevent the establishment of forbs. Herbicide application may be needed to manage perennial weeds.

Low Forb Diversity After Year 3 – If grasses and sedges are establishing successfully but there is a lack of forbs it is recommended to conduct inter-seeding of additional forbs in late fall. See the [Xerces Society guide](#) for additional information about inter-seeding wildflowers.