

# Easement Monitoring Process Overview

2013



# Why do we monitor?

- ❖ Need to document the condition of our Stewardship lands at all times
- ❖ Weakness identified in the audit

# Monitoring Phases

- ❖ **Phase I** – Acquisition through Restoration (from closing until the completion of restoration practice installation; 3 to 5 years more or less)
- ❖ **Phase II** – Restoration Completed (3 years)
- ❖ **Phase III** – 5-Year Cycle (repeating 5-Year cycle)

# Stewardship Lands Responsibilities

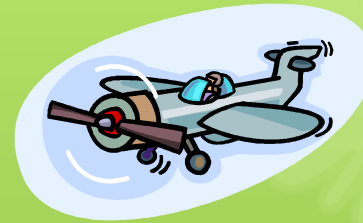
*Every* easement will  
be monitored *every*  
year.

# Methods of Monitoring – *Ownership Review*

- ❖ Landowner contact and answer question 1 of the worksheet
- ❖ Only applicable in the year immediately following onsite monitoring *that did not require corrective actions or had no violations.*



# Methods of Monitoring - Offsite



- ❖ A review of the most recent aerial photography and answer questions 1,3 and 4 of the worksheet.
- ❖ Primary work done by the Remote Sensing Lab in Ft. Worth.

# Methods of Monitoring – Summary Review

- ❖ At a minimum; a cursory onsite visit, a landowner contact and answer questions 1, 2, 3 and 4 on the worksheet.
- ❖ Only applicable during the pre-restoration phase.
- ❖ An annual contract status review is also required if there is an active restoration contract.



# Methods of Monitoring – Onsite Review

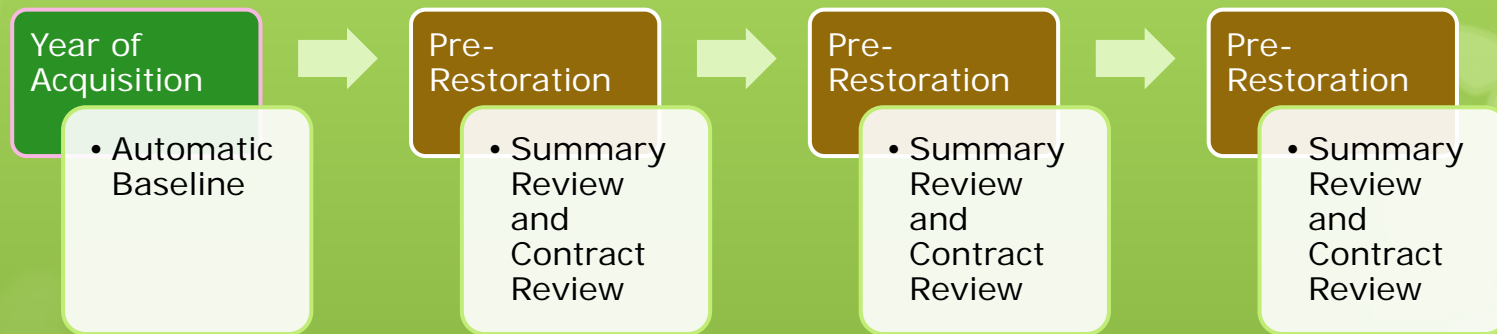


- ❖ At a minimum; landowner contact, a review of available aerial photography and answer all questions on the worksheet.



# Monitoring Timeline – Phase I – Acquisition through Restoration

**Continue until fully restored.**



**Policy states 3 years. In reality, in MN, it will be 2 to 5 years more or less.**

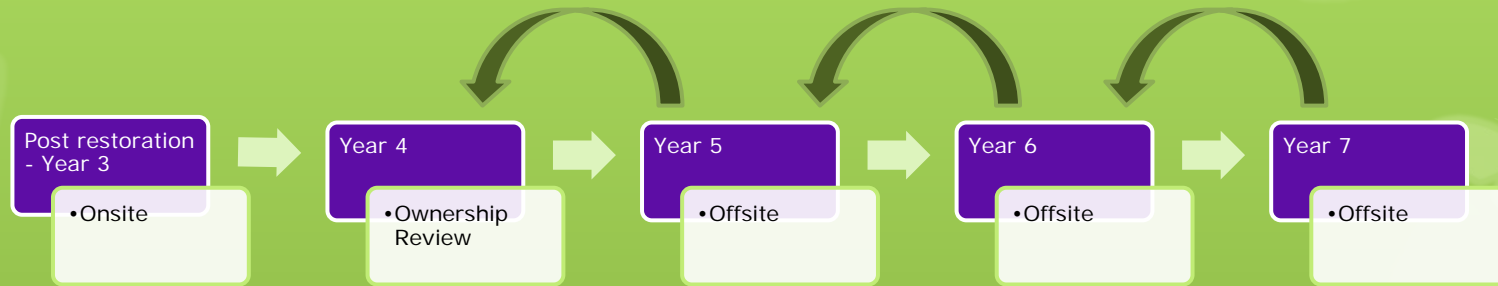
# Phase II – Restoration Complete

Five year cycle begins post restoration year 3



# Phase III – Five Year Cycle

Offsite monitoring uses imagery from the previous year.

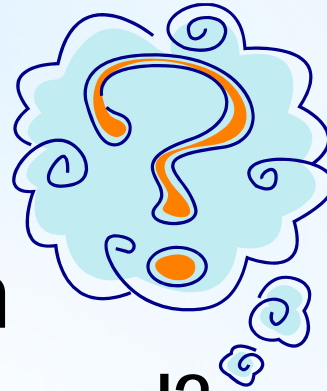


Cycle repeats every 5 years unless.....

# Five Year Cycle Repeats Unless a Site Visit is Required in Event Of:

- ❖ A compatible use authorization requiring close monitoring (such as grazing or food plot)
- ❖ **Post-violation remediation** (2 consecutive years of onsite monitoring)
- ❖ A highly managed site requiring close supervision
- ❖ A significant event, such as a severe storm, that would require an inspection
- ❖ **An ownership change** (2 consecutive years of onsite monitoring)
- ❖ A change in baseline condition (FRPP)
- ❖ Sheet erosion; erosion from concentrated flow; runoff from heavy use areas; any major construction or vegetative alteration
- ❖ Detection of a potential violation via offsite monitoring or other method

# Spot Quiz



How often will each easement be monitored?

- A. Every 5 years
- B. Every 3 years
- C. Every year
- D. Only when there is a violation



# Answer

How often will each easement be monitored?

~~A. Every 5 years~~

~~B. Every 3 years~~

**C. Every year**

~~D. Only when there is a violation~~



# FY- 2013 Minnesota Monitoring

- ❖ All **Ownership Reviews** have been completed using remote data layers. We have a contract with a Title Agent to resolve ownership questions remaining from 2012.
- ❖ **Offsite Reviews** will be completed by the Remote Sensing Labs and the NRCS State Office.
- ❖ **Summary Reviews** will be completed by NRCS and MASWCD (sub-contracted to Districts).
- ❖ **Onsite Reviews** will be completed by BWSR, NRCS and MASWCD (sub-contracted to Districts).

# Rules and Guidance for Monitoring

- ❖ All the required monitoring documents will be posted on SharePoint. Files will be provided for MASWCD and BWSR. (*MN Home/Programs/WRP/Easement Monitoring and Violations/2013 Monitoring*)
- ❖ The list of easements will be posted on SharePoint. The file will be provided to MASWCD and BWSR.
- ❖ Monitoring and enforcement guidance is in Title 440, Part 514, Subpart G and Part 527, Subpart P and is available to everyone online.



# WHO WILL BE DOING ONSITE MONITORING IN 2013?

A. BWSR

B. NRCS

C. MASWCD and Districts

D. All of the Above

# ANSWER

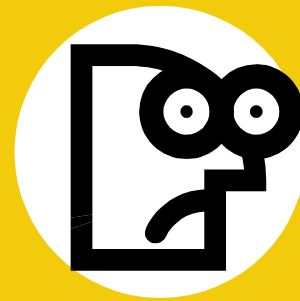
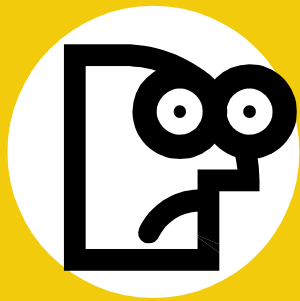
## WHO WILL BE DOING ONSITE MONITORING IN 2013?

~~A. BWSR~~

~~B. NRCS~~

~~C. MASWCD and Districts~~

**D. All of the Above**



**It's QUESTION TIME !!**