



# ARC COLLECTOR - DIRECTIONS FOR SWCD'S (Apple/iPhone)

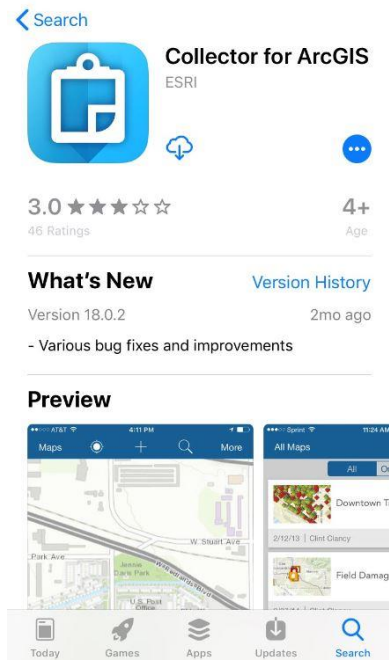


## WHY USE ARC COLLECTOR?

- Brings BuffCAT and other buffer related data to the field
- Ability to find your current location in relation to BuffCAT data
- Use of FSA aerial photos in the field
- Edit BuffCAT data (compliance status, field notes) from the field
- Turn-by-turn driving directions to sites selected (think MapQuest style)
- Attach photos from mobile device to BuffCAT compliance parcels – for improved tracking
- Measure distances and area
- Bookmark Locations

## DIRECTIONS FOR USE:

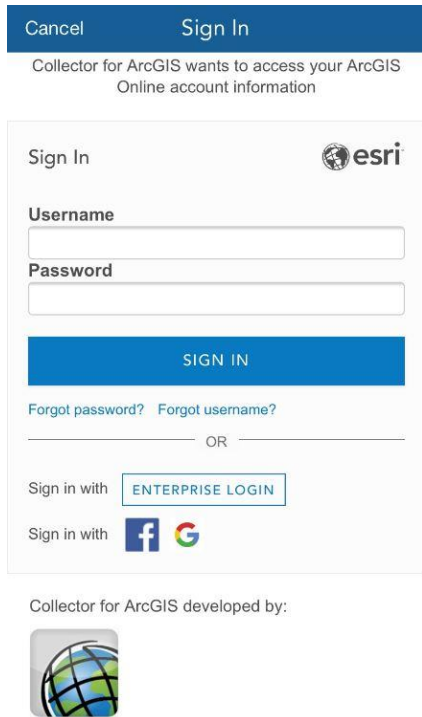
### 1. DOWNLOAD COLLECTOR FOR ARCGIS ON MOBILE DEVICE - Download on iTunes Store



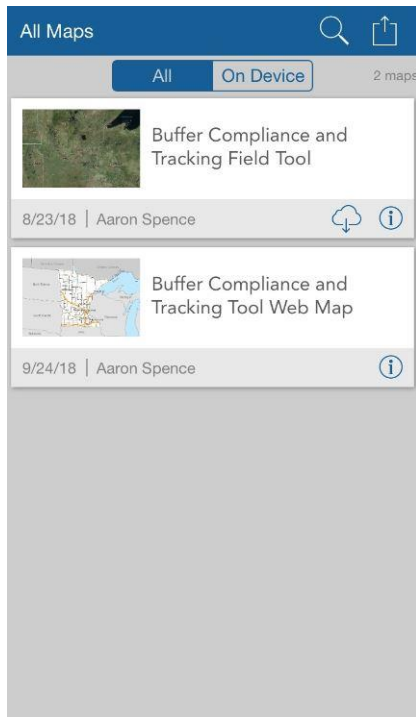
### 2. SELECT AND OPEN “ArcGIS online”



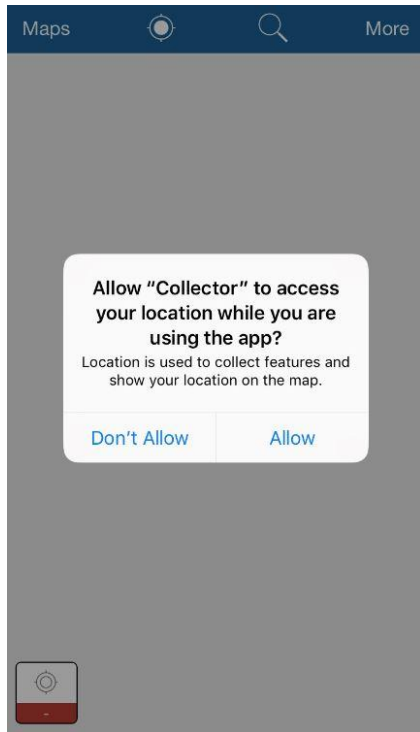
### 3. SIGN-IN USING YOUR BUFFCAT LOG-IN INFORMATION



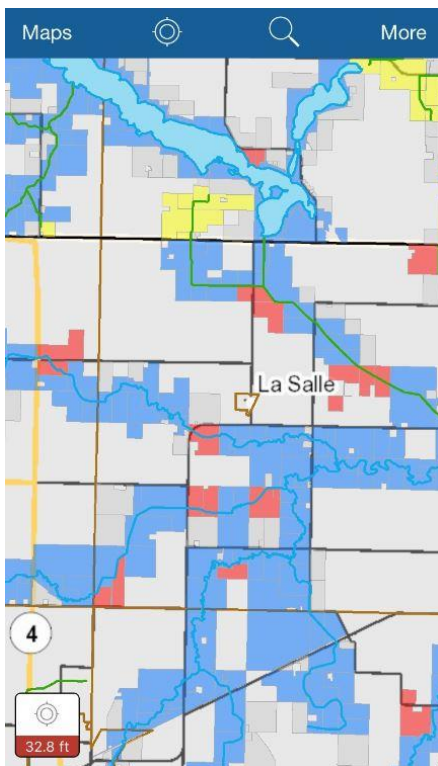
4. **SELECT A MAP** – Use “Buffer Compliance and Tracking Tool Web Map” if you have cellular data service. If no cellular data is available, use the “Buffer Compliance and Tracking Field Tool” to download where you will when out in the field. For more information on how to download a map prior - see Arc Collector guidance video: [http://bwsr.state.mn.us/buffers/guidance/BufFCAT\\_Collector\\_for\\_ArcGIS\\_Video\\_Guidance.mp4](http://bwsr.state.mn.us/buffers/guidance/BufFCAT_Collector_for_ArcGIS_Video_Guidance.mp4)



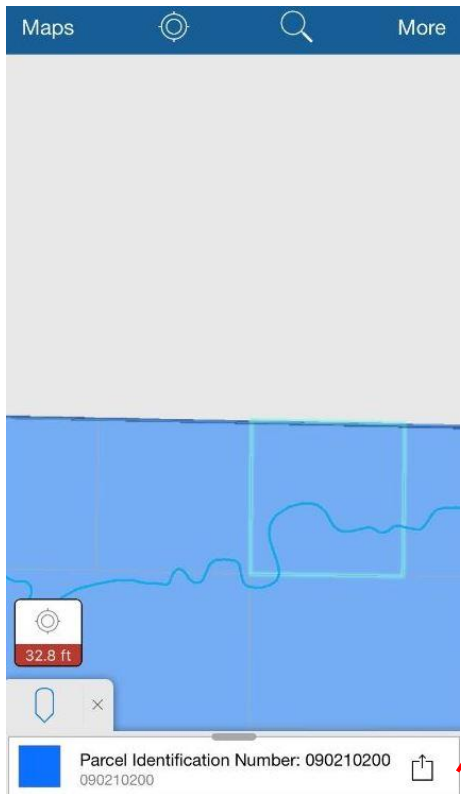
**5. ALLOW THE APP TO ACCESS YOUR LOCATION**



**6. ZOOM-IN TO VIEW PARCELS (THIS VIEW IS FROM THE BUFFER COMPLIANCE AND TRACKING TOOL WEB MAP)**



## 7. CLICK ON PARCEL TO BRING UP INFORMATION AND OPTIONS



### Options Menu:

- Edit – Edit BuffCAT Data, Add Photos, Make Notes
- Zoom To
- Show Details – View BuffCAT Data
- Directions to Here – Turn-by-Turn Directions to the parcel

## 8. “SHOW DETAILS” OPTION WITH BUFFCAT INFORMATION IN ARC COLLECTOR.

