



One Watershed
One Plan

Yellow Medicine River

Pilot Watershed Profile

Fall 2015

Planning Partners

Counties:

- Yellow Medicine
- Lyon
- Lincoln
- Lac qui Parle

Soil and Water Conservation Districts:

- Yellow Medicine
- Lyon
- Lincoln
- Lac qui Parle

Watershed Districts:

- Yellow Medicine River Watershed District

Joint Powers Boards:

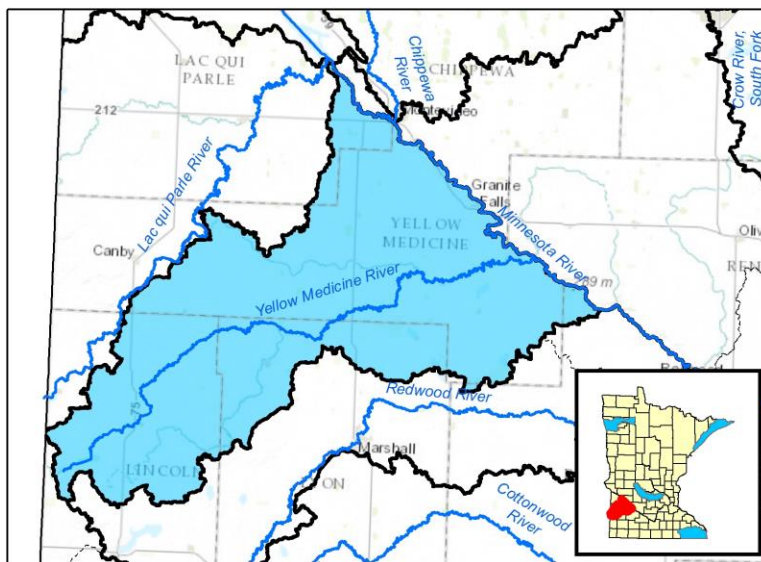
- Area II Minnesota River Basin Projects, Inc.

What is *One Watershed, One Plan*?

The vision of *One Watershed, One Plan* is to align planning on major watershed boundaries with prioritized, targeted, and measurable watershed plans developed and implemented locally. These plans build on existing efforts, including current local water plans, state and local knowledge, and a systematic, science-based approach to watershed management.

The Yellow Medicine River Pilot Watershed

The *One Watershed, One Plan* boundary for the Yellow Medicine River was drafted along the area's major watershed boundary. The resulting watershed planning area includes portions of Lac Qui Parle, Lincoln, Lyon, and Yellow Medicine counties.



In early 2014, planning partners in this watershed joined together to submit a nomination to pilot the *One Watershed, One Plan*. In June, the Yellow Medicine River was selected as one of five major watersheds across the state to pilot this program.

The pilot program has involved a broad range of stakeholders, including local

governments, state agencies, and community members as partners in the planning process.

“It is exciting and scary at the same time,” said Lou Ann Nagel, Yellow Medicine SWCD Manager. “We’re working through the hurdles. It is a lot more complicated when you’re working with more entities, but it is a learning process, and we’re progressing.”



The plan will address the largest threats and provide the greatest environmental benefits to the Yellow Medicine River Watershed.

Next Steps for the Yellow Medicine River's *One Watershed, One Plan*

- Finish writing the draft plan.
- Determine which entities will be responsible for implementing watershed plan priorities.
- Complete the plan by 2016, and implement it throughout the 10-year timeframe of the plan.
- Provide BWSR with lessons, feedback, and experience gained from the pilot plan to help adjust and streamline the framework for statewide rollout of the program.

Tips from the Yellow Medicine River

- **"I'm learning it is important to be very familiar with the water planning process outline before you start, and what is supposed to be part of each step, so you don't leave important decisions or data gathering until the last minute when you may not give a topic the thought it deserves."**

--Terry Wittnebel, Laq qui Parle Watershed District Manager

- **"We all need to know we need to dedicate a lot of time. Be committed, and when you have meetings, have representation."**

--Lou Ann Nagel, Yellow Medicine SWCD Manager

- **"Advisory committees are extremely important and include all sectors of the community representing every aspect, including agricultural producers and city/township governments," said Kerry Netzke, Executive Director of Area II Minnesota River Basin Projects, Inc. "Be fully comprehensive and find good, dedicated volunteers to make up a solid, committed advisory committee who knows the watershed intimately."**

--Kerry Netzke, Executive Director of Area II Minnesota River Basin Projects, Inc.

One Watershed, One Plan Background

One Watershed, One Plan is rooted in Minnesota's long history of water management by local government. Planning for the program began with the Local Government Water Roundtable (Association of Minnesota Counties, Minnesota Association of Watershed Districts, and Minnesota Association of Soil and Water Conservation Districts). Roundtable members recommended that local governments charged with water management should develop focused implementation plans on a watershed scale. In 2012, the Minnesota State Legislature, through the *One Watershed, One Plan* legislation, authorized BWSR to develop and implement a comprehensive watershed management plan approach. The resulting approach coordinates and consolidates water plans on a watershed basis instead of political boundaries.

How Do I Stay Informed?

For up-to-date information on the statewide rollout of *One Watershed, One Plan*, please visit the BWSR program website, available at www.bwsr.state.mn.us/planning/1W1P/index.html. For information on the Yellow Medicine River pilot watershed, please contact your local County, Soil and Water Conservation District, or Watershed District office, and visit http://www.area2.org/index.php?option=com_content&view=article&id=12&Itemid=15.