

eLINK 4 Web Mapping Instructions

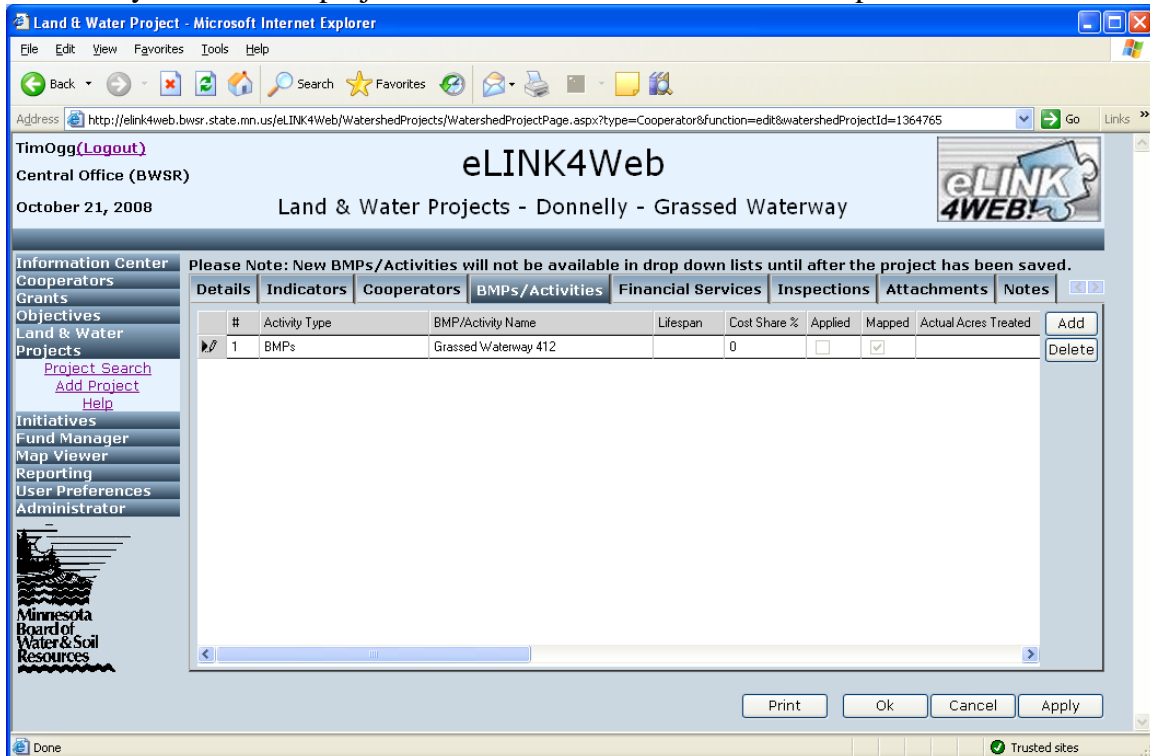
There are two different methods for accessing the GIS/Map window. One method is through the “Draw Shape” button associated with BMP’s. The other method is from the “MAP” menu choice in the left hand set of menus. The left hand “MAP” menu choice is only for browsing the map. If you want to draw a shape, please be sure to access the mapping window via the “Draw Shape” button.

NEW!!! – eLINK now supports uploading features from an ESRI shapefile you may have created on your own. Scroll down to page 9 for details on this new capability. New printing features are also described which can assist you in producing an Exhibit A for the Walk-In Access program for example.

In the previous version of eLINK, the software determined if the bmp you were digitizing should be drawn as a POINT, LINE or POLYGON shape. In the new version you have know if the BMP your working on is a POINT, LINE or POLYGON and then pick the right layer on which to digitize. (described further below)

The new GIS interface won’t automatically set the drawing tool to the right feature type. If you try to draw a shape type that is different from the chosen bmp you’ll receive an error.

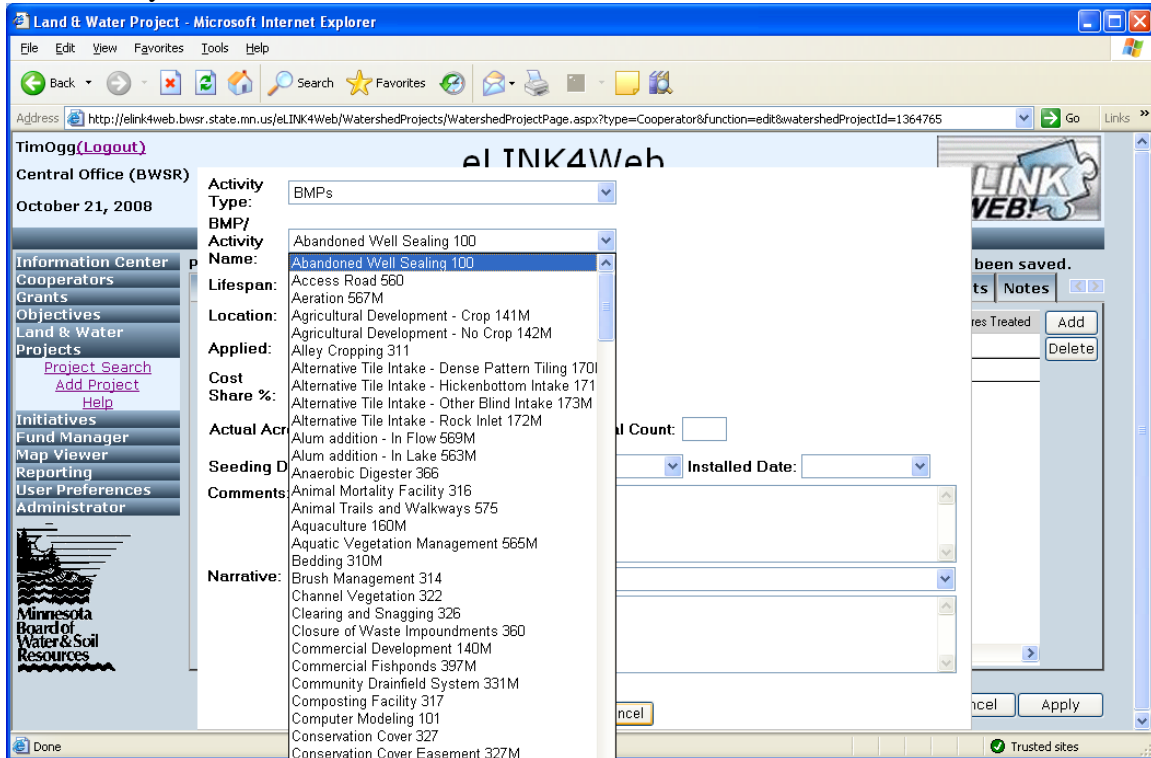
1. Navigate to a Land & Water Project and open the “BMP’s/Activities” tab. If BMP’s are already added to the project the screen will look like this example:



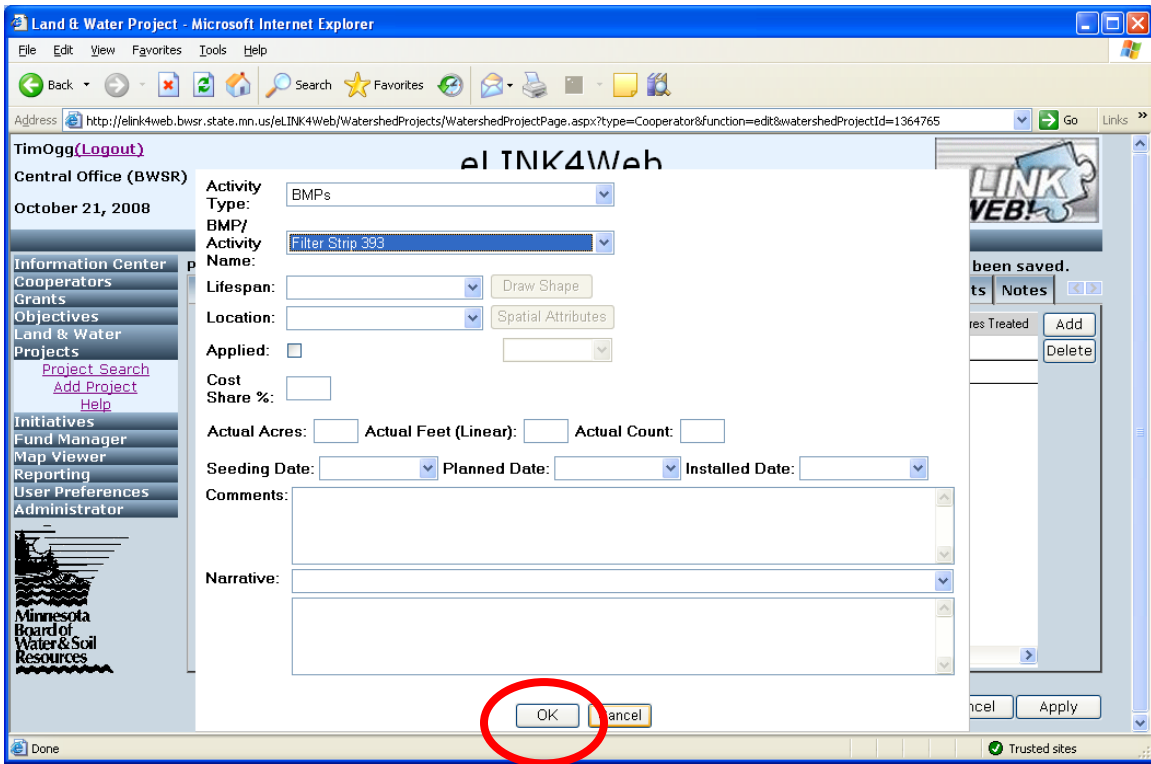
The screenshot shows the eLINK4Web web application interface. The browser window title is "Land & Water Project - Microsoft Internet Explorer". The address bar shows the URL: <http://elink4web.bwsr.state.mn.us/eLINK4Web/WatershedProjects/WatershedProjectPage.aspx?type=Cooperator&function=edit&watershedProjectId=1364765>. The user is logged in as TimOgg (Logout). The page title is "eLINK4Web" and the subtitle is "Land & Water Projects - Donnelly - Grassed Waterway". The date is October 21, 2008. The main content area shows a table of BMP/Activities. The table has columns: #, Activity Type, BMP/Activity Name, Lifespan, Cost Share %, Applied, Mapped, Actual Acres Treated, and Add. There is one row with # 1, Activity Type BMPs, BMP/Activity Name Grassed Waterway 412, Lifespan, Cost Share % 0, Applied, Mapped (checked), and Actual Acres Treated. There are buttons for Add and Delete. The left sidebar contains a navigation menu with items: Information Center, Cooperators, Grants, Objectives, Land & Water Projects, Initiatives, Fund Manager, Map Viewer, Reporting, User Preferences, and Administrator. The bottom of the page has buttons for Print, Ok, Cancel, and Apply. The status bar shows "Done" and "Trusted sites".

#	Activity Type	BMP/Activity Name	Lifespan	Cost Share %	Applied	Mapped	Actual Acres Treated	Add
1	BMPs	Grassed Waterway 412		0	<input type="checkbox"/>	<input checked="" type="checkbox"/>		Delete

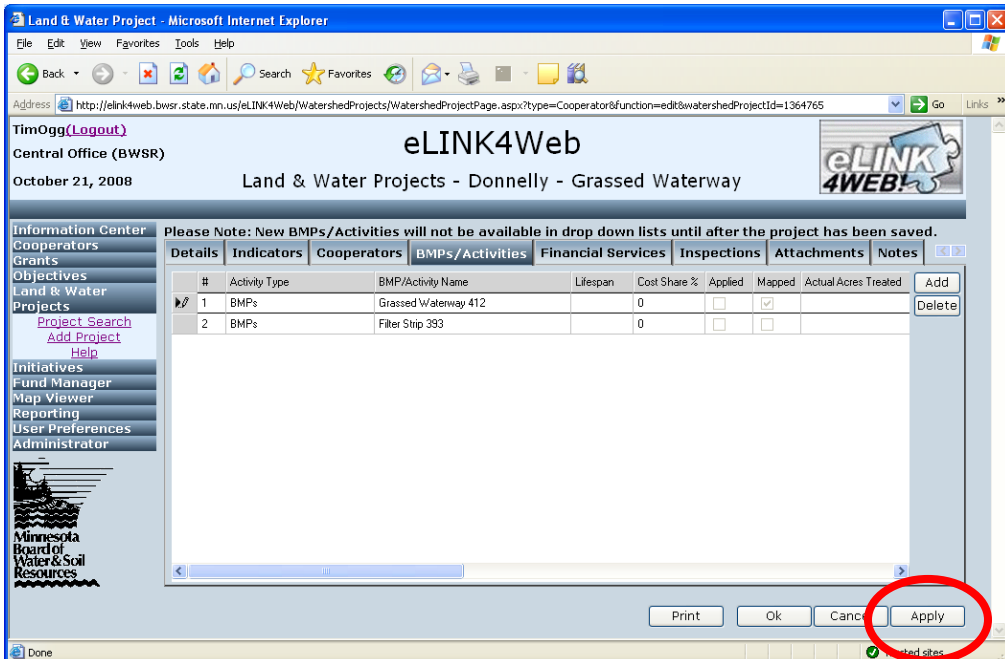
2. Add a new bmp to the project by clicking the “Add” button along the right hand side of the window. Select a BMP from the “BMP/Activity” pick list. The bmp list should look familiar to you.



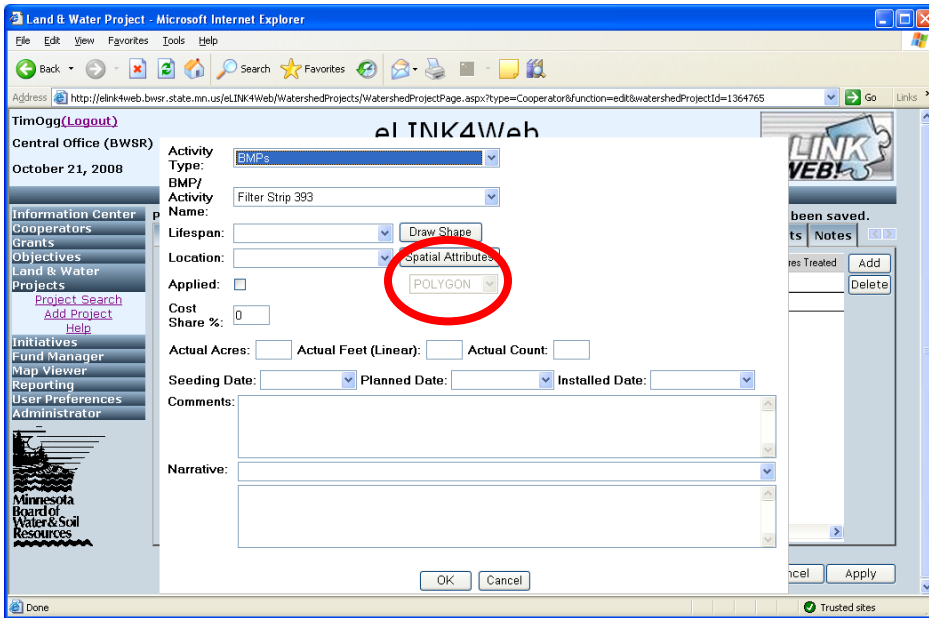
And click the OK button: (notice the Draw Shape button is not active)



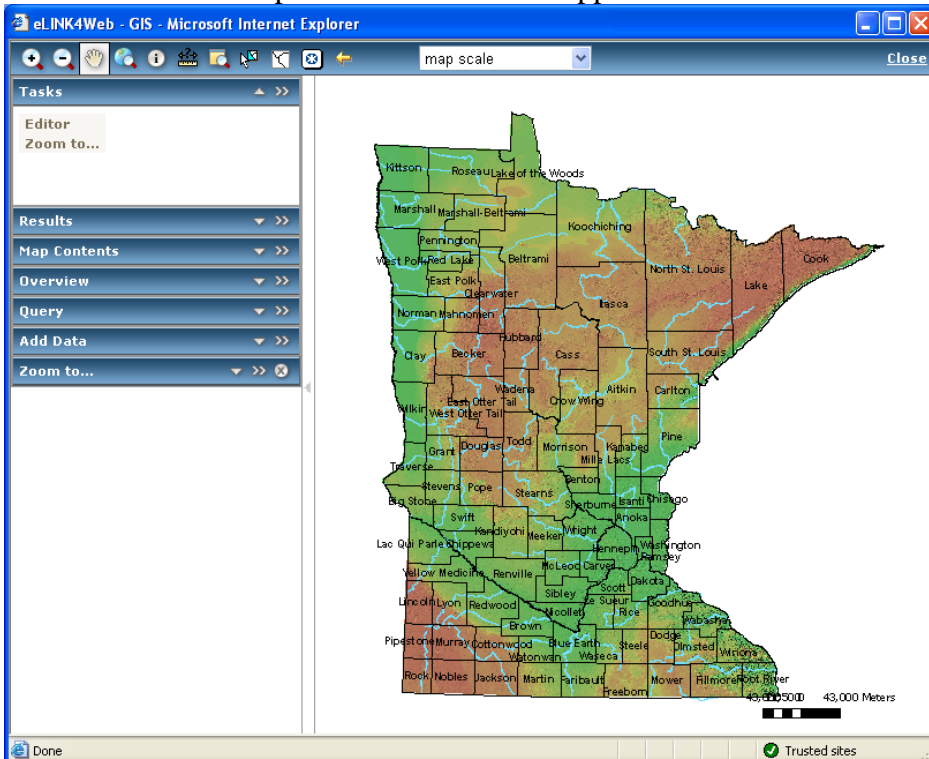
3. Click the APPLY button on the project in order to save the bmp information you just added.



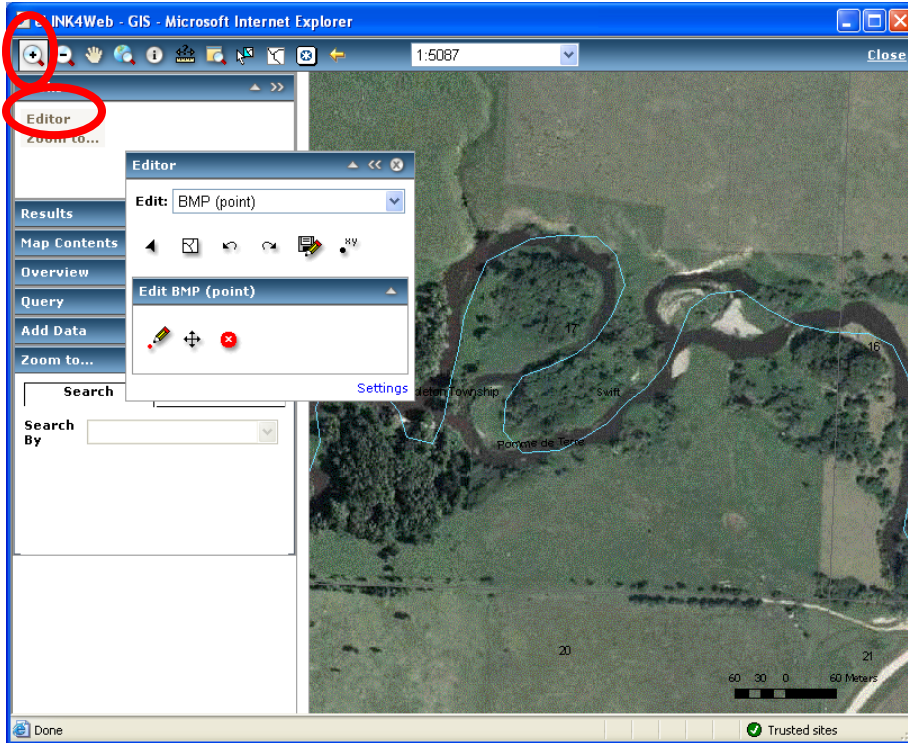
4. Open the "BMP" screen again, by double clicking on the BMP row in the table. Note the shape type is now listed, just below the "Spatial Attribute" button and the Draw Shape button is active.



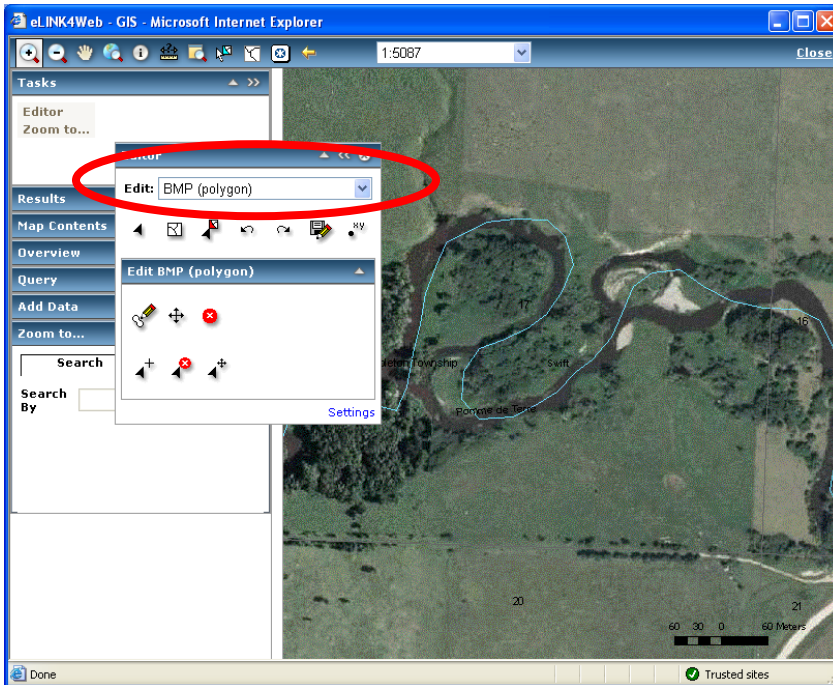
5. Click the draw shape button and the GIS application will load as show here:



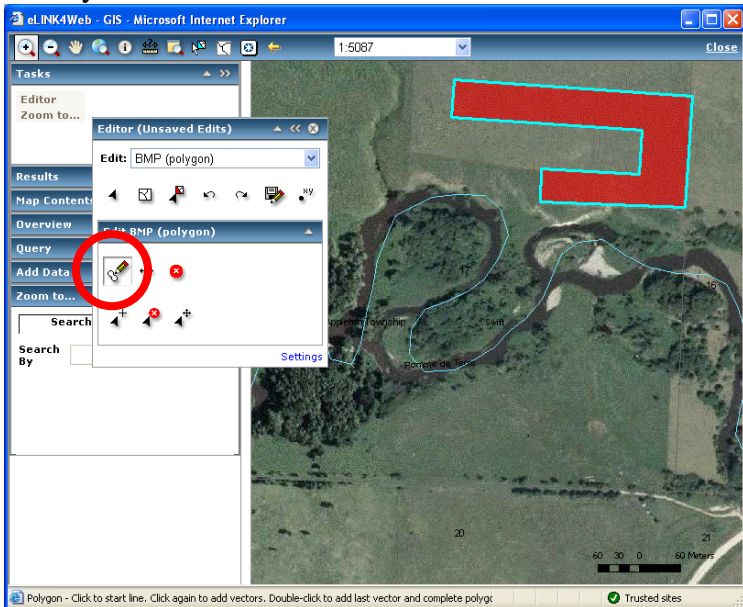
6. Zoom to the bmp's location using the magnifying glass then, click the "Editor" link that is in the "Tasks" section in the upper left hand corner of the screen to show the editor menu.



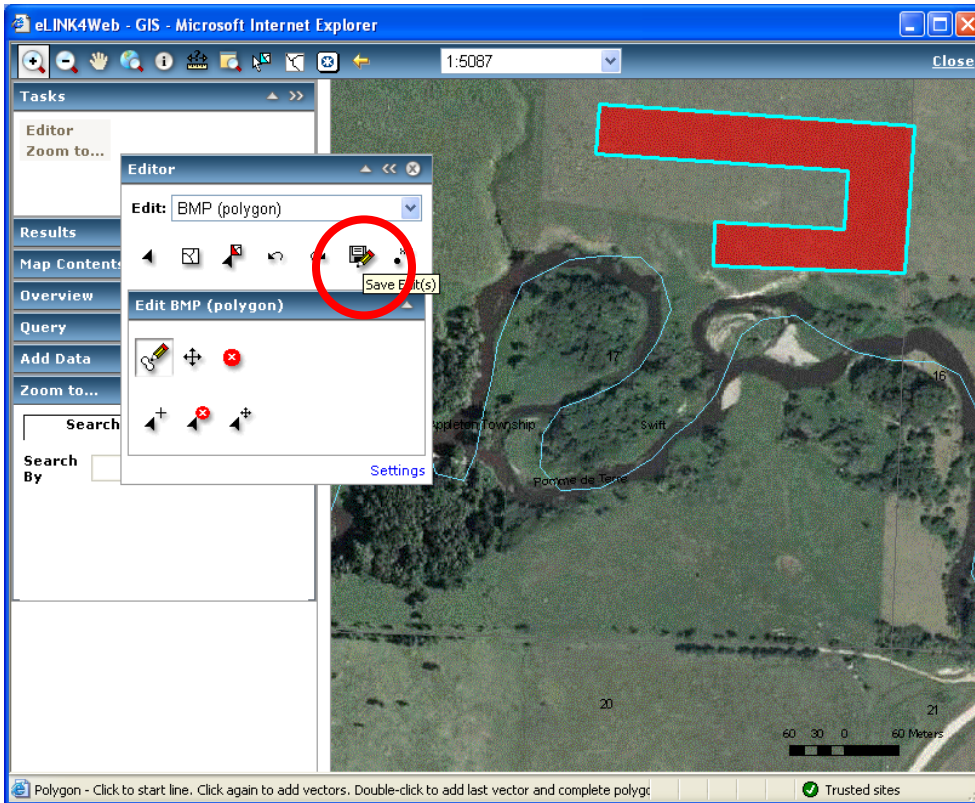
7. Pick the correct layer to edit from the "Edit" pick list. The screen from step 4 has the information to remind you which type of shape is used to represent this bmp. If you forget, it should be on the window behind the GIS window. You should be able to bring it forward to double check the shape type. For this example we need to choose POLYGON.



8. Click the “create feature” tool on the “Edit BMP” menu, screen from step 7 shows the menu. You can hover you mouse over the tool buttons to see a brief description of their functionality. After selecting the create feature tool start drawing your polygon boundary. Single click and each point, double click to finish drawing. You will see a selected shape when you are done.



9. **CLICK** the **SAVE** button to save the changes. **YOU MUST SAVE IT** with the button.



10. Close the GIS window with the “Close” link in the upper right and then click the “X” to close the window frame. You will return to the L&W Project BMP information.

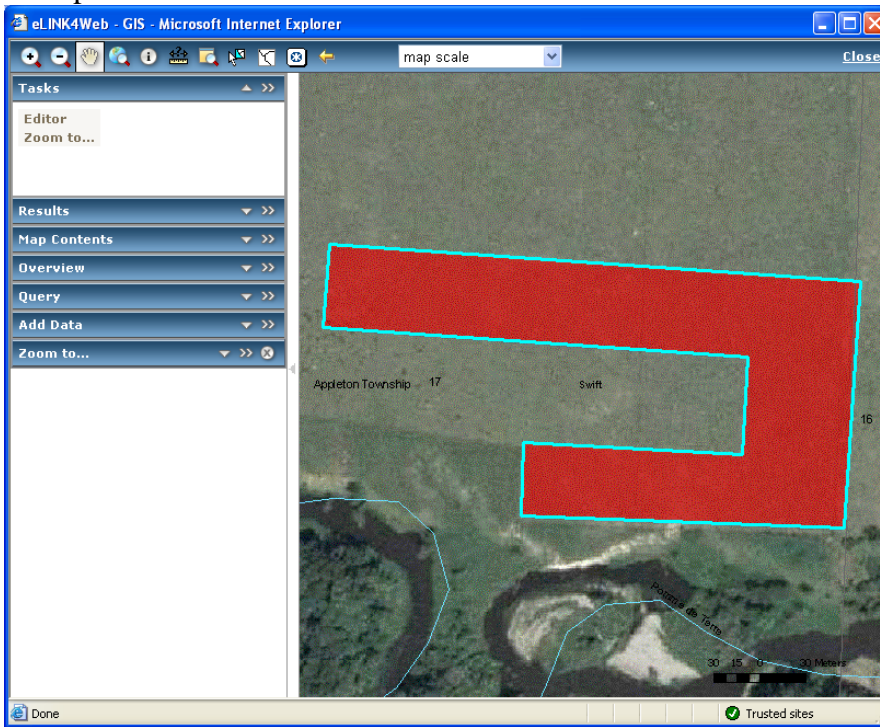
11. Click OK on the BMP “rolldown” screen.

12. Click APPLY on the project to save. (The mapped check box will not be updated until you leave the project and open it up again. This is on the list to fix).

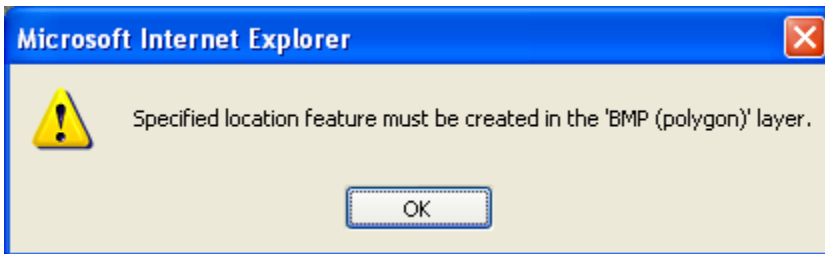
(more info on next page)

Additional Info:

If you click the “Draw Shape” button and a shape has already been drawn for the bmp, the map will come up zoomed to the feature that was previously drawn as in this example.



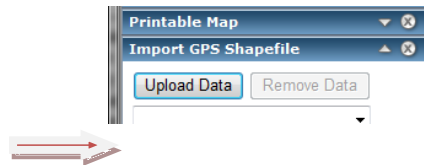
If you forget to pick the right layer (POINT, LINE, POLYGON) and then try to draw a feature, you'll receive a friendly error like this: In this example I the Edit pick list was set to BMP (point). But the BMP for which I was trying to draw a shape was a POLYGON feature.



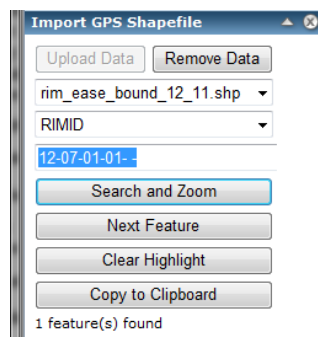
Uploading features from an ESRI Shapefile

The eLINK mapping interface now supports the uploading of a selected feature from an ESRI shapefile. In order to do this, you'll need to have a valid shapefile containing at least three components (.shp, .shx and .dbf files). These three files need to be saved into a zip compressed file.

- 1) Create a zip compressed file containing all the components of your ESRI Shapefile. (select all files in Windows Explorer, right click and choose Send To – Compressed (zipped) folder)
- 2) Open the eLINK Map interface by clicking on the “Draw Shape” button for the BMP you want to upload.
- 3) Once the map loads, expand the Tasks item in the main menu, then click “Import GPS Shapefile”
- 4) A new item appears at the bottom of the menu, click to expand, then click the “Upload Data” button and browse to the location of your zipped file, then click “Upload”



- 5) All the features contained in the shapefile will be loaded into the map. The import tool allows you to search for a specific feature based on the attributes presented in a dropdown list. In the example below, we're searching for a particular easement feature with RIMID 12-07-01-01- -. Then click “Search and Zoom”, the feature will be highlighted with crosshatching. Note: 1 feature(s) selected indicated below.



- 6) Once you've got a single feature selected that you want to import, click “Copy to Clipboard” button, which allows you to use it in the editor. Then you can click the “Remove Data” button in order to clear the shapefile features from the display.
- 7) Next, click the Task menu, and then the Editor. Select the appropriate feature layer to edit (BMP (point), (line) or (polygon)).
- 8) Next click on the “Paste Feature from Clipboard” button within the editor task. This will pull the feature you selected and copied from your shapefile directly into the eLINK BMP layer.
- 9) Finally, click on the “Save Edits” button to commit the feature into the Geodatabase.

Printing a BMP map from eLINK

The eLINK mapping interface allows for users to produce a basic map layout including title, legend, scalebar. This is useful for creating an Exhibit A for the Walk-In Access program for example.

- 1) Adjust the map display (zoom out/pan) in order to make sure the features you want to print are visible.
- 2) Click on “Printable Map” item in the map window.
- 3) Enter a descriptive title for your map. Consider including landowner name, practice description and/or project number required by the WIA program.
- 4) Click “Create Print Page” button at the bottom of the tool window.
- 5) A new window will appear that contains the Title, Map Frame and Legend.
- 6) Click “File” -> Print in this new browser window.

