



# Lily Lake Stormwater Retrofit



## Clean Water Funds: 2011

Clean Water Grant	\$43,400
Leveraged Funds*	\$10,850
Total Project Budget	\$54,250

\* Leveraged Funds include required 25% local match

### Targeted Water:

Lily Lake

### Project Sponsor:

Middle St. Croix Watershed Management Organization

### Partners:

MSCWMO, Washington Conservation District, City of Stillwater, East Metro Water Resource Education Program

### Grant Period:

January 2011 - December 2012

### Project Contact:

Amy L. Carolan  
(651) 275-1136 x22  
Acarolan@mnwcd.org  
www.mscwmo.org

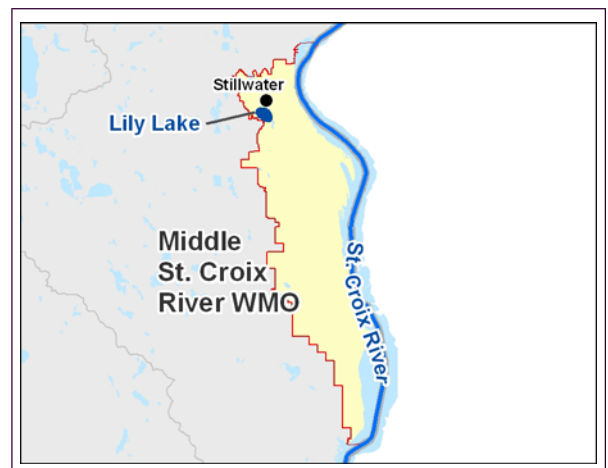


## Project Narrative

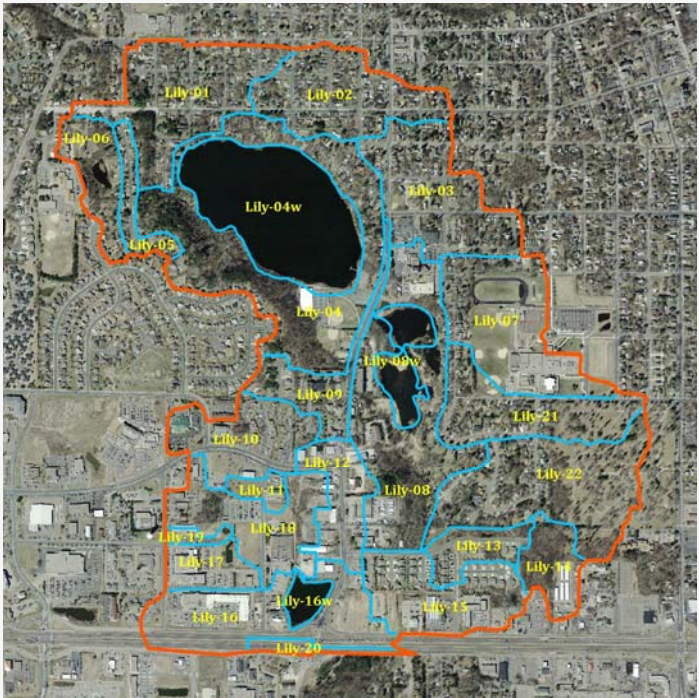
Lily Lake, in Stillwater, is a popular recreational spot for residents with its swimming beach, fishing pier, and canoe access. Lily Lake is impaired by excess nutrients, and restoring its water quality is a priority for the community. A recent assessment of the 22 catchments, or 590 acres, that drain to Lily Lake identified multiple locations where stormwater management features could be installed to help achieve the 145-pound phosphorus load reduction that is needed to help improve water quality.

The purpose of this project is to work with residents in two of the 22 catchments, located on the northeast side of Lily Lake. To accomplish this, MSCWMO will hold a series of informational meetings, distribute literature, and go door-to-door in an effort to enlist the participation of residents living in target neighborhoods. The project will install up to 23 stormwater treatment features such as raingardens on private property and in city right-of-way by the end of 2012. Once landowners and project locations have been identified, the MSCWMO will select 1-2 contractors to complete the work in one large effort. This will also allow for efficiency and consistency amongst the projects.

Completion of the project will reduce phosphorus loading to Lily Lake by 9.5 pounds. The end goal will be to implement all of the projects recommended in the assessment report for both Lily and McKusick Lakes, with the long-term result being restored water quality for both lakes.



# Lily Lake Stormwater Retrofit



Map shows land area included in the recently completed Lily Lake sub watershed Assessment. Catchments Lily-02 and Lily-03 will be the focus of this project.



Lily Lake in Stillwater, MN. A swimming beach, seen in the background and fishing pier draw area residents to the Lake.



This recently completed shoreline restoration is an example of the types of features that will be installed as part of this project.