



US Army Corps
of Engineers®

St. Paul District



Public Notice

PUBLIC NOTICE DATE: October 25, 2010

Final Midwest Regional Supplement (Version 2.0) to the Corps of Engineers Wetland Delineation Manual

1. The U.S. Army Corps of Engineers, St. Paul District, and the Minnesota Board of Water and Soil Resources (BWSR), announce the availability of the *Regional Supplement to the Corps of Engineers Wetland Delineation Manual: Midwest Region (Version 2.0)*. This supplement was developed by regional expert delineators with input from state and Federal agencies, academia and other local experts. It was peer reviewed by a panel of independent scientists and field tested by interagency teams of state and Federal agencies to determine the clarity and ease of use of the document and whether its use will result in any spatial changes in wetland jurisdiction for Clean Water Act Section 404 purposes. The final version of the supplement can be found at:

http://www.usace.army.mil/CECW/Pages/reg_supp.aspx.

2. The following changes were incorporated into Version 2.0 of the Midwest Regional Supplement:

a. Minor wording and organizational changes have been made throughout the document in an attempt to improve its clarity and consistency with other regional supplements. Several web links have been updated.

b. In Chapter 2 (pages 22-24), a new indicator (Indicator 1 – Rapid Test for Hydrophytic Vegetation) has been added. It is designed as a quick confirmation of hydrophytic vegetation in areas where all dominants across all strata are OBL and/or FACW, reducing the need for additional sampling in these obvious cases. This indicator has been reviewed and tested in other regions, and is being incorporated into the supplements for all regions at the recommendation of the National Advisory Team.

c. In Chapter 3, some new photos of hydric soil indicators have been added. In addition, the wording of several hydric soil indicators has been updated to conform to Version 7.0 of the National Technical Committee for Hydric Soils (NTCHS) field indicators. In particular, see hydric soil indicators A5, A11, A12, S6, and S7.

d. A new hydric soil indicator for problem soils has been added to Chapter 3 (page 67). Indicator TF12 (Very Shallow Dark Surface) was approved by NTCHS for testing nationwide and, therefore, can be used with the problem soil procedures in Chapter 5 of the supplement.

The data form has been revised accordingly.

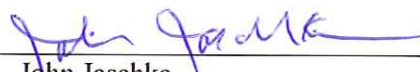
3. The Corps will continue to accept comments/suggestions and new data on this supplement. Comments may be submitted to Ms. Karen Mulligan (CECW-CO), U.S. Army Corps of Engineers, 441 G. Street, NW, Washington DC 20314-1000 or by e-mail to: 87Manual@usace.army.mil

4. The BWSR has posted a PDF version of the Midwest Supplement, boundary map, and the new data form, on its website: <http://www.bwsr.state.mn.us/>


5. For administrative convenience, the St. Paul District has coordinated with the BWSR to develop a map of the Minnesota portion of the Midwest Supplement that relies on township boundaries as opposed to the irregular land resource region boundaries (see Figure 1). For additional guidance, contact Steve Eggers at the St. Paul District (contact information is below) or BWSR wetland specialist. Contact information for BWSR is available on its website listed above.

6. Given their involvement in the implementation of the Minnesota Wetland Conservation Act, the local Soil and Water Conservation District should also be contacted for questions specific to individual projects.

7. The St. Paul District contact for the regional supplements is Mr. Steve Eggers, Senior Ecologist, Regulatory Branch, (651) 290-5371 or steve.d.eggers@usace.army.mil.



John Jaschke
Executive Director, BWSR

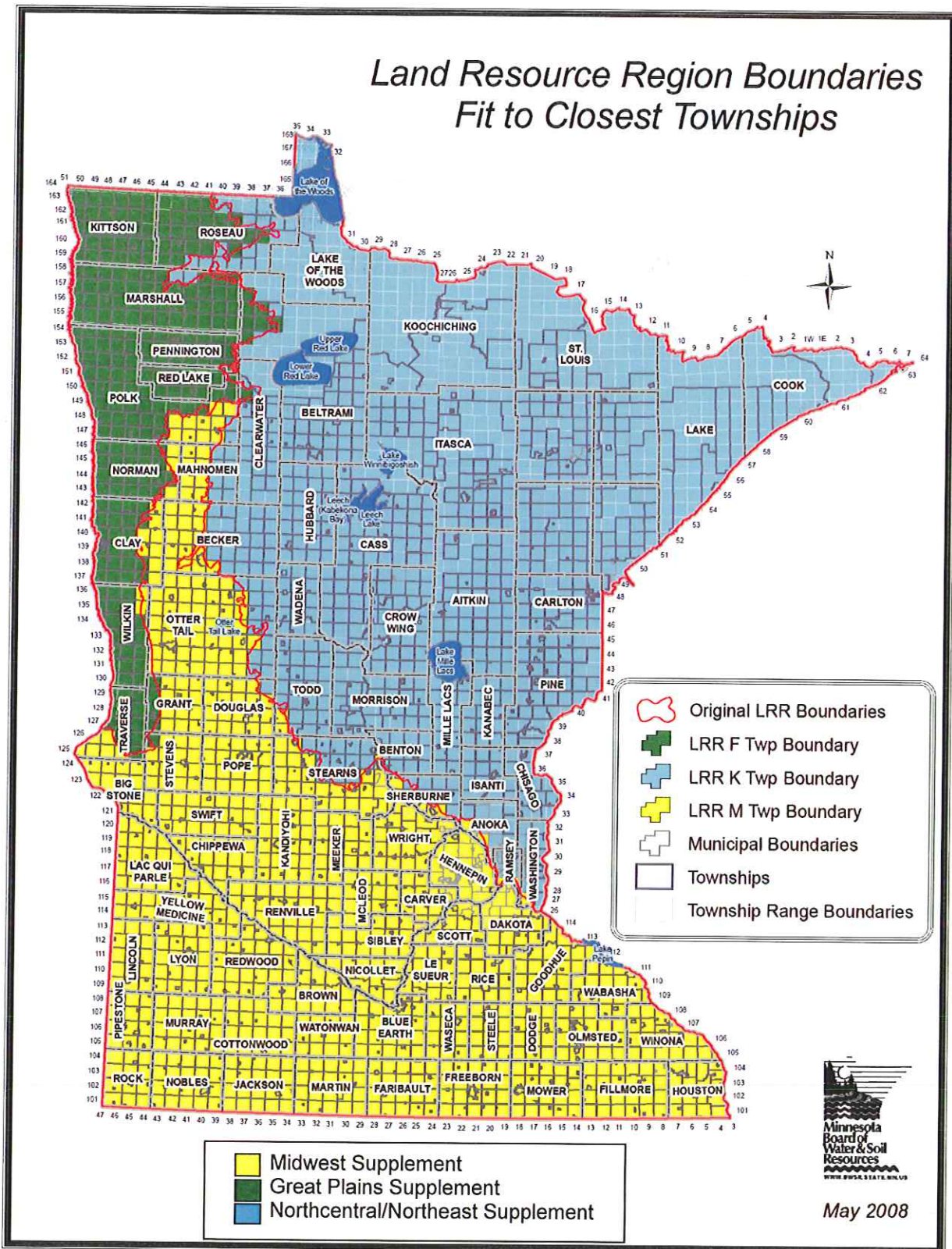


Tamara E. Cameron
Chief, Regulatory Branch

Attachment

FIGURE 1

Land Resource Region Boundaries Fit to Closest Townships



May 2008